



PROFILE TECHNICAL DATA AND DIAGRAM

Model F300i

Web width (mm) W 89

Flange Height (mm) F 41/39 B

Dimple pan diameter (mm) D 11

Screw hole diameter (mm) S 3.8

Service hole diameter (mm) V 34.2

Bolt hole diameter (mm) B 13.5

Machine Model Number F300i-W89-F41/39B-D11-S3.8-V34.2-B13.5

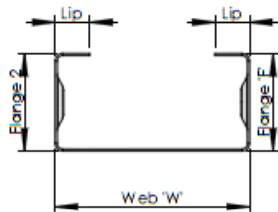
Slit Coil width for the above specifications (mm) 182 with 11.5mm lips

Slit Coil width for the above specifications (mm) 186 with 12.5mm lips

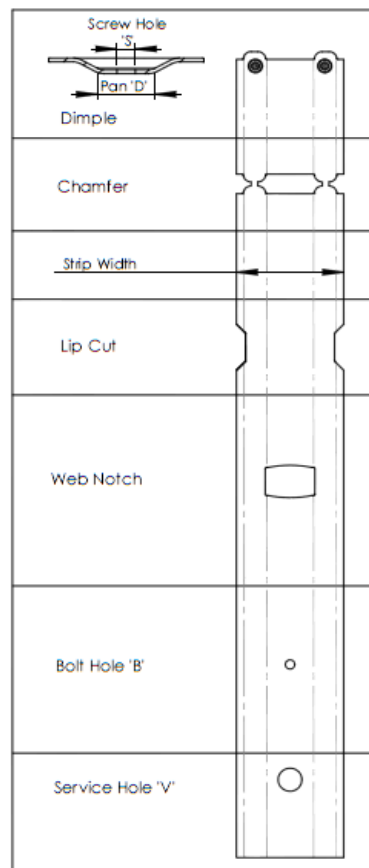
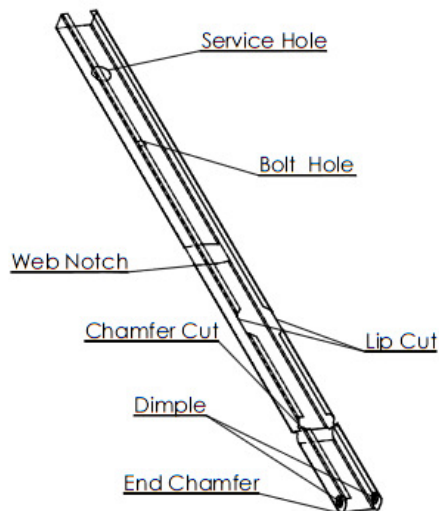
Notation- All sizes are nominal and will also vary with the thickness of material

Custom Options:

Note: S = Symetric Flange Heights
B = Boxable Flange Heights



IF SYMETRIC PROFILE: FLANGE 2 = F
IF BOXABLE PROFILE: FLANGE 2 = F-2MM



CUSTOMER SIGN-OFF

Customer

FRAMECAD

Initials: _____

Signature: _____

Date: _____
